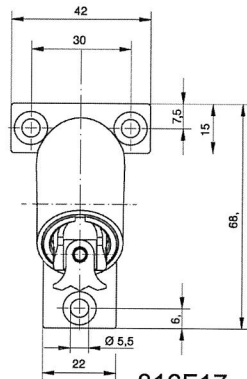
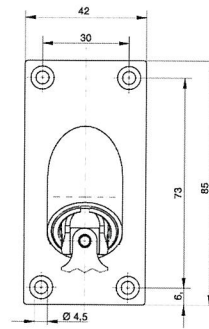


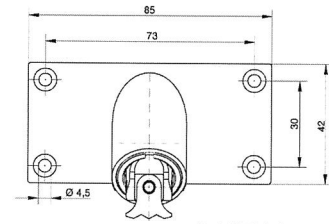
816F16....



816F17....



816F40....



816F41....

Gelenklager 90°, Kreuzgelenke Ø 16 mm, Stahl vernickelt

Art. Nr.	Beschreibung	Befestigungsplatten
816F16....	22 x 85 mm	Zn, glanzvernickelt
816F17....	T 42 x 68 mm	Zn, glanzvernickelt
816F40....	42 x 85 mm	Zn, glanzvernickelt
816F41....	85 x 42 mm	Zn, glanzvernickelt

Gelenklager 90°, 45° Querablenkung, Schäfte Ø 16 mm, Stahl vernickelt

Art. Nr.	Beschreibung	Befestigungsplatten
816F18....	22 x 85 mm	Zn, glanzvernickelt
816F19....	T 42 x 68 mm	Zn, glanzvernickelt
816F5T....	50 x 42 mm	Zn, glanzvernickelt
816F6T....	Ø 50 mm	Zn, glanzvernickelt